

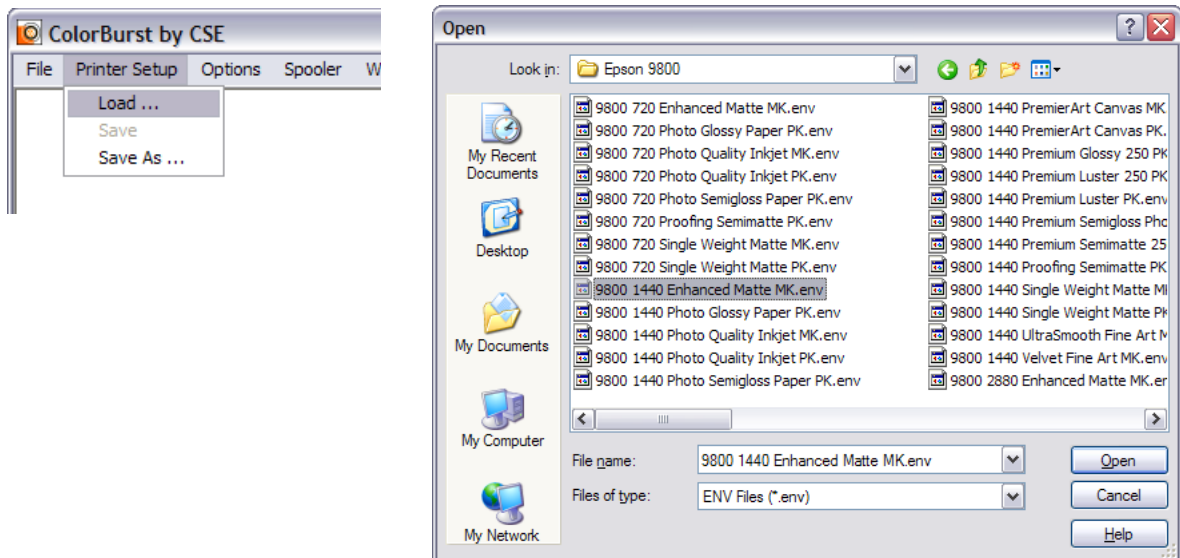
ColorBurst Quick Start

ColorBurst RIP Layout Series

IMPORTANT If you are printing to an Epson printer, make sure that the Epson Printer Driver has been installed and that you can print a file from an imaging application (such as Photoshop or Paint) using the driver before printing from ColorBurst. This will confirm that the printer is properly connected..

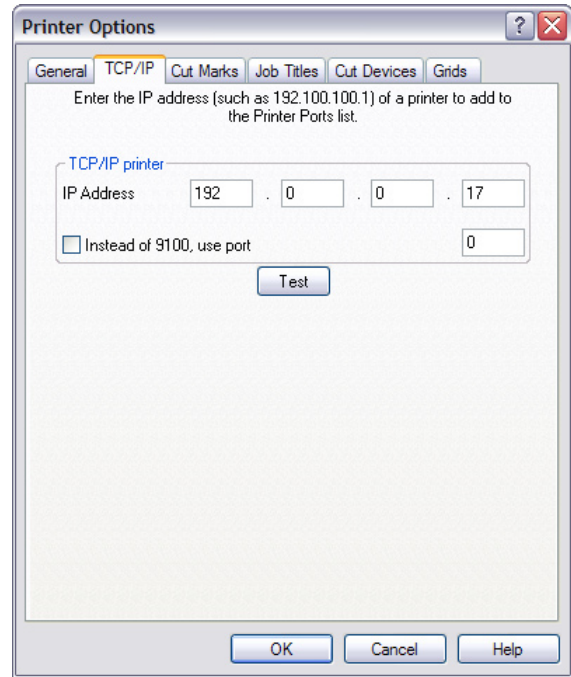
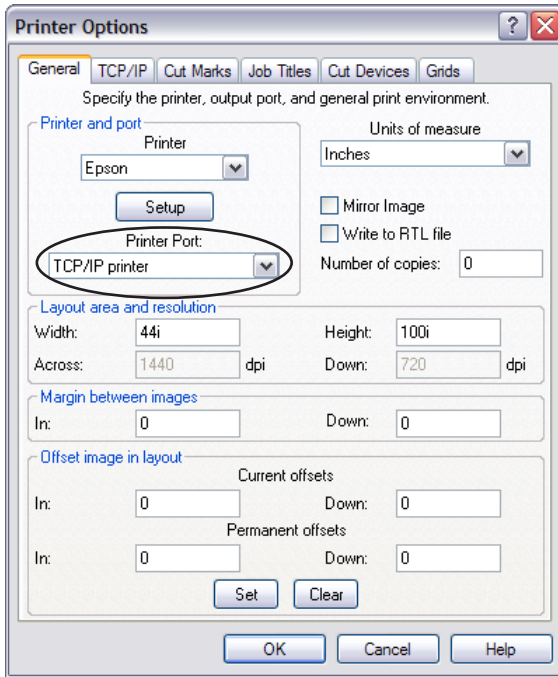
1. Load a Printer Setup

In the ColorBurst toolbar, go to Printer Setup > Load. In the Open dialog, open the folder for your printer model and select an environment based on your print resolution, paper, and ink.



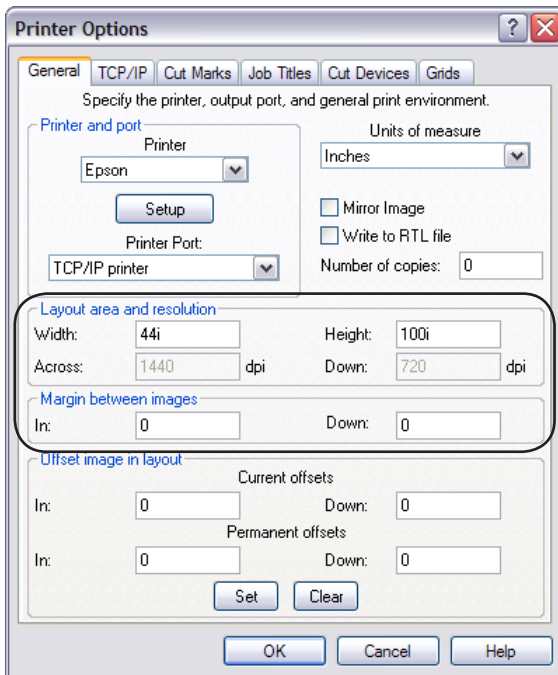
2. Select a printer connection

In the File > Printer Options dialog, select a connection port in the Printer Port pop-up menu. If you are connecting via TCP/IP, go to the TCP/IP tab and type in a valid IP address, then select TCP/IP printer in the Printer Port pop-up menu.



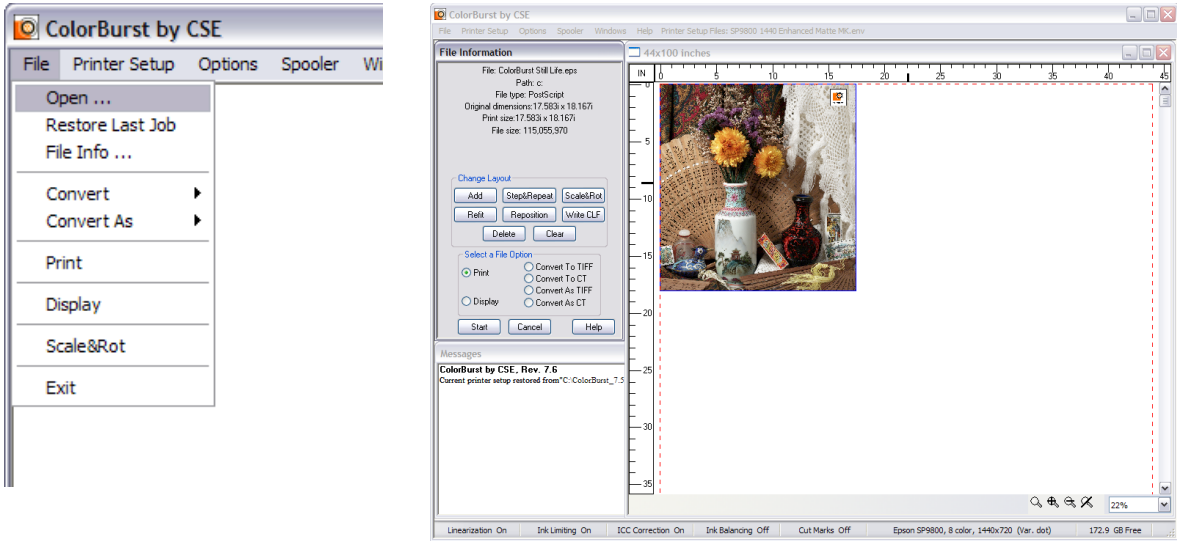
3. Set layout size and margins

In the Printer Options dialog, type in the width and height of your media in the Layout area Width and Height fields. Change the margins between images if desired. Click OK to close the Printer Options dialog when you are finished.



4. Open a file to print

Select File > Open and open an image file. It will appear in the Layout window. To view the image and create a thumbnail for preview in the layout, double-click the file to Display it (the Display window will open).



5. Send the file to the printer

In the File Info window, click the Print button to begin processing. The file will be sent to the printer. The layout window will close after the file has been printed.

